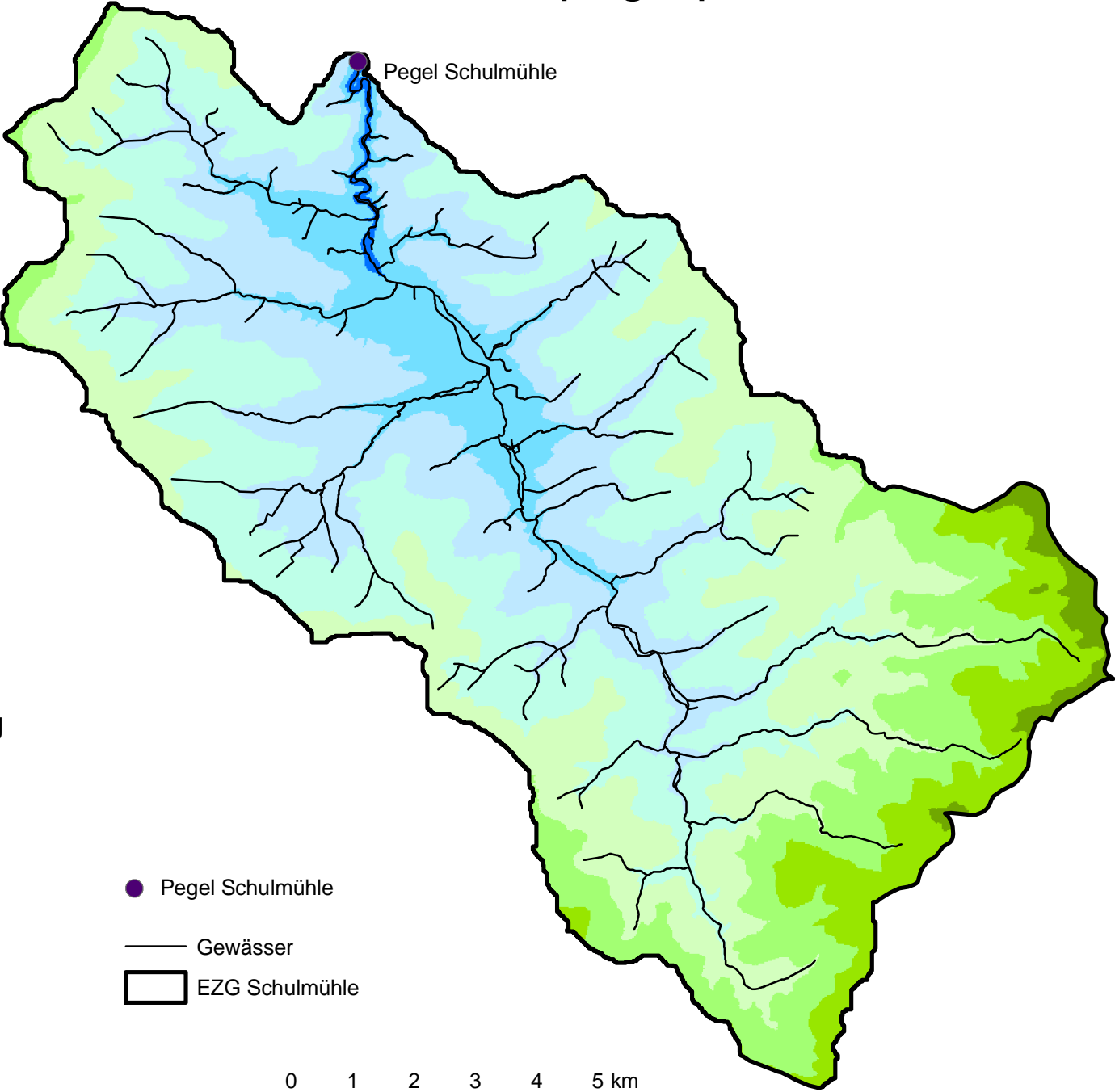





Topographie im EZG Schulmühle



Hangneigung

-  162 - 200
-  201 - 250
-  251 - 300
-  301 - 350
-  351 - 400
-  401 - 450
-  451 - 500
-  501 - 550
-  551 - 600

-  Pegel Schulmühle
-  Gewässer
-  EZG Schulmühle

