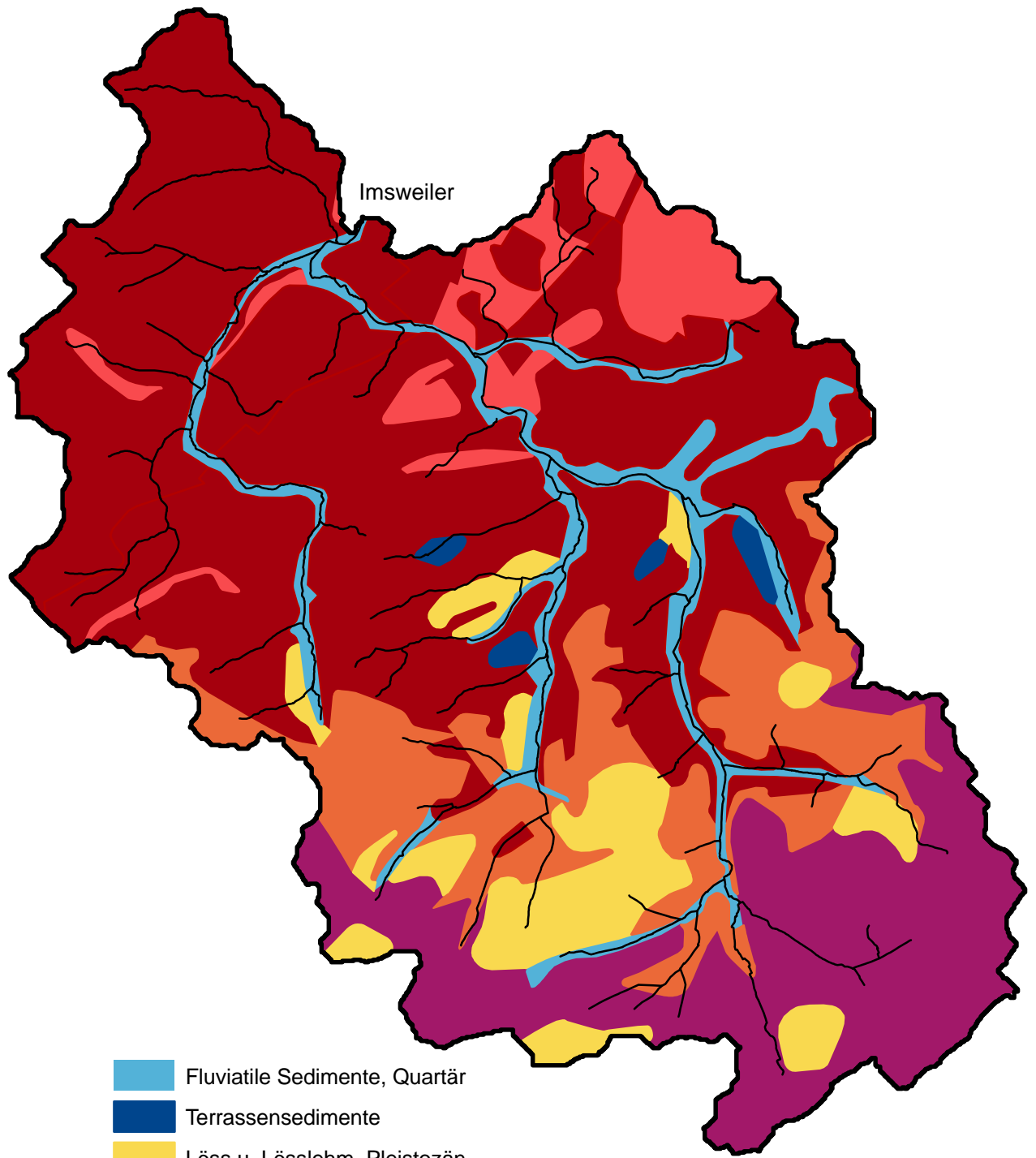











Geologie EZG Pegel Imsweiler



-  Fluviale Sedimente, Quartär
-  Terrassensedimente
-  Löss u. Lösslehm, Pleistozän
-  Buntsandstein
-  Schluffiger Sandstein, Zechstein
-  Ton-, Silt- u. Sandstein, Rotliegendes
-  Vulkanite, Permokarbon

-  EZG Pegel Imsweiler
-  Gewässer

